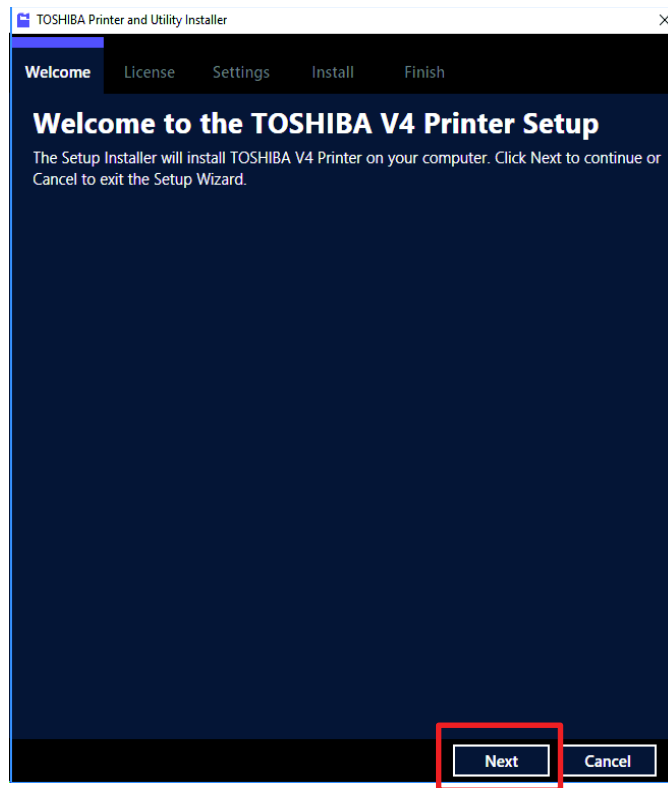


V4 Printer Driver Installation/Uninstallation Procedure

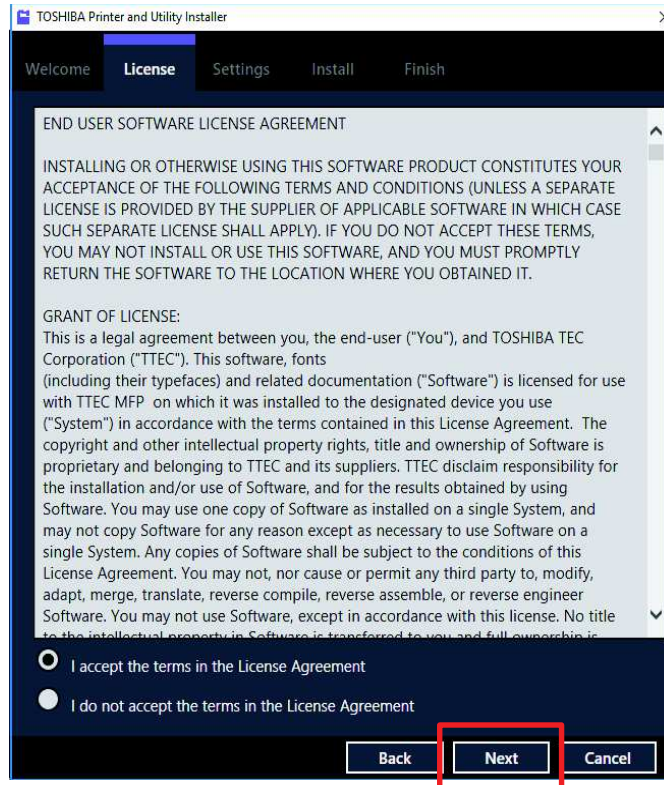
Installation/Uninstallation Procedure

V4 printer driver installation

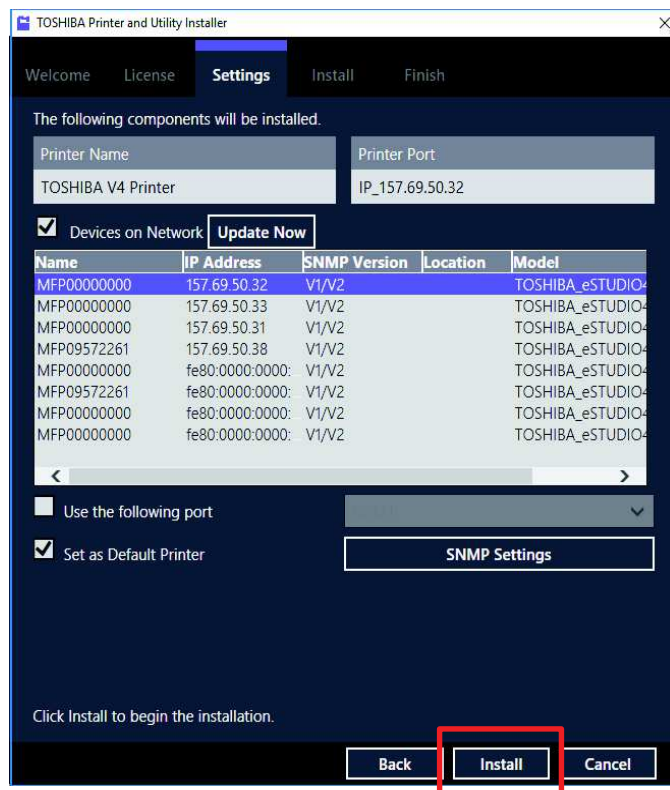
1. Copy [V4PD_01_201603.zip] to the computer and decompress it.
2. Open the "Installer" folder via the Explorer. Double click "eScSetup.exe" to start TOSHIBA Printer and Utility Installer.
3. Click [Next].



4. Select [I accept the terms in the License Agreement] and click [Next].



5. The detected printers are displayed. Select this MFP and click [Install].



6. When [Completed the TOSHIBA V4 Printer wizard] appears, click [Finish].

In the same installation manner for the printer drivers included in the Install Disc, it is possible to perform the installation via the Add Printer wizard of the printer without using the Software Installer.

For details, refer to "Other Installations" in the Software Installation Guide co-packed with the MFP.

V4 printer driver uninstallation

5

The uninstallation method is the same as that for the printer drivers included in the Install Disc. Perform uninstallation by referring to "Uninstalling Printer Drivers" in the Software Installation Guide co-packed with the MFP.

Toshiba Print Experience installation

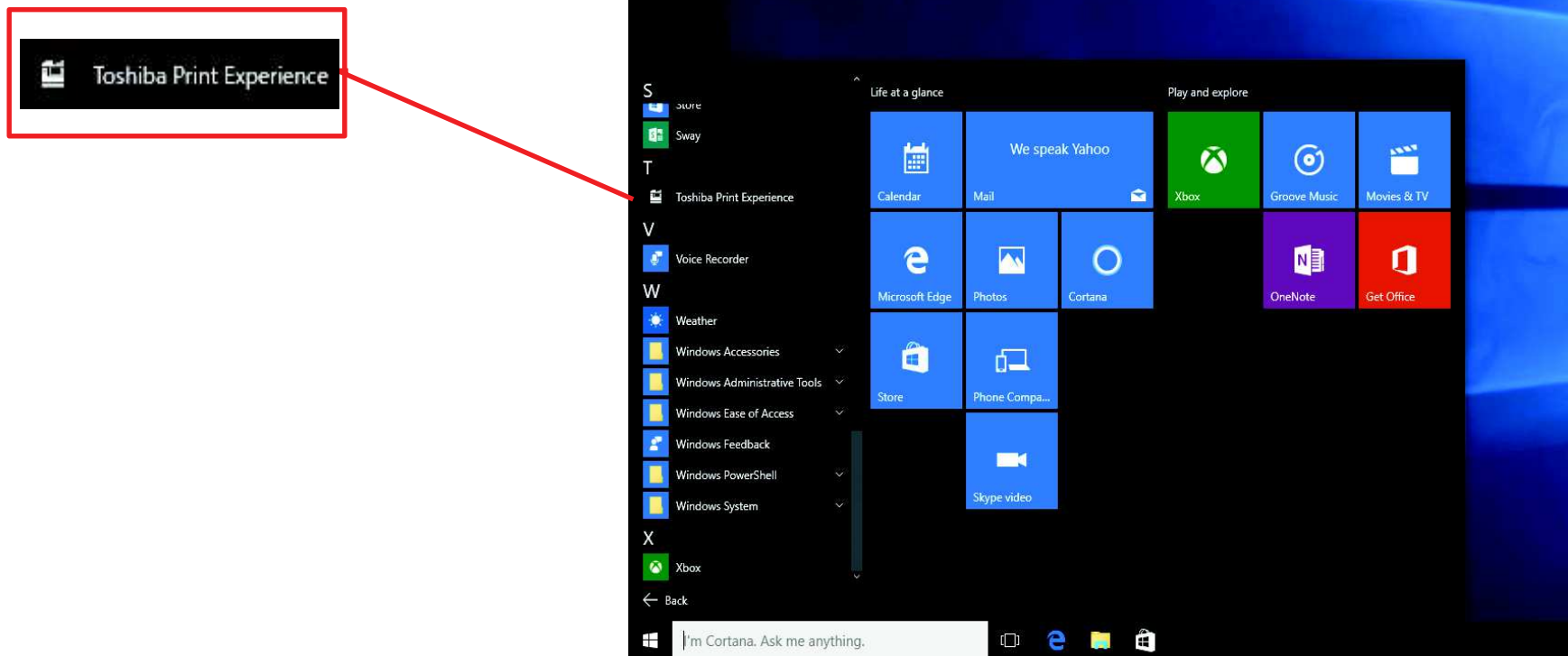
6

To utilize the printing function of a V4 printer driver when printing is carried out from a store application, it is necessary to install Toshiba Print Experience (related store application).

If the link with a Microsoft account has already been made, Toshiba Print Experience will automatically be installed when V4 printer driver installation is performed.

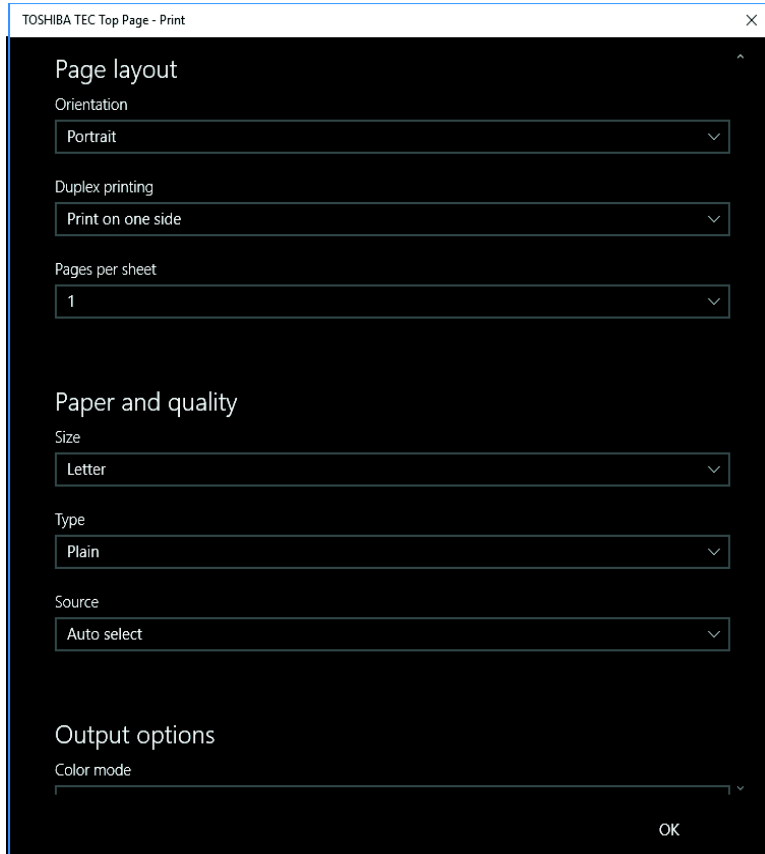
When the installation fails, perform it from the Windows store.

When Toshiba Print Experience is installed properly, it will appear on the Start screen as below.

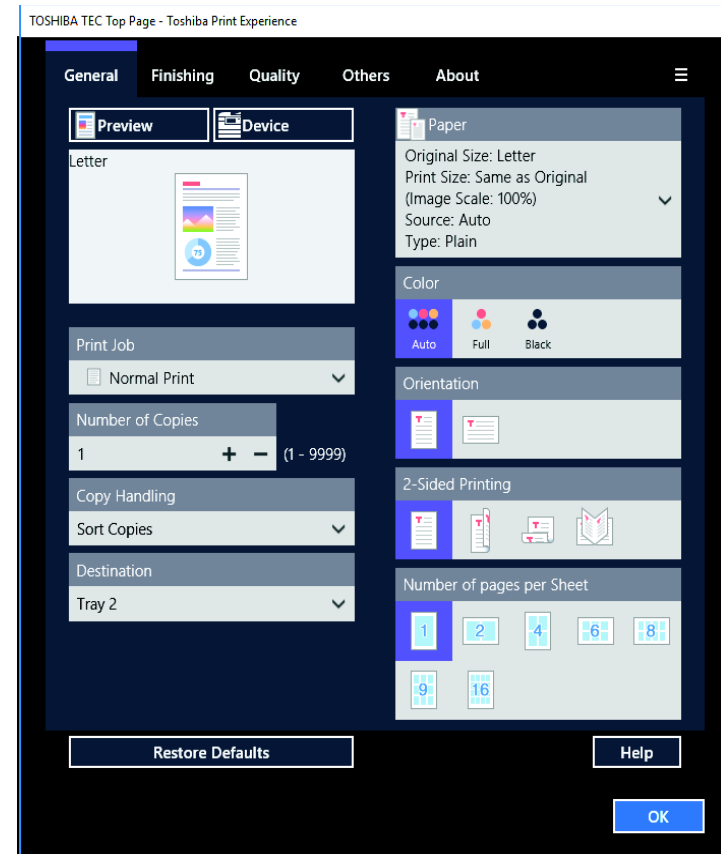


At before or after the installation of Toshiba Print Experience, the printing preferences screen opened from⁷ a store application is changed as below.

Before Toshiba Print Experience is installed:



After Toshiba Print Experience is installed:

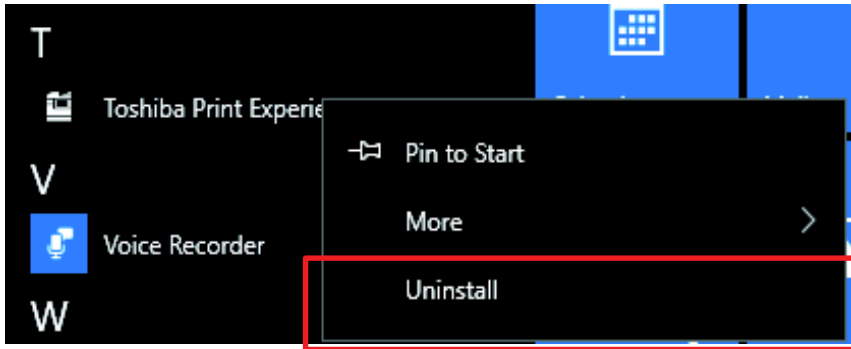


Before printing from a store application is performed, be sure to confirm that the screen has been changed to "After Toshiba Print Experience is installed" as above.

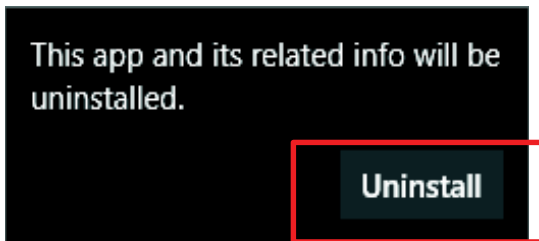
Toshiba Print Experience uninstallation

9

1. Right-click Toshiba Print Experience on the Start screen and click [Uninstall].



2. Click [Uninstall].



Printer Sharing

10

Printer sharing

In the printer sharing of a V4 printer driver, some procedures differ from those for the printer drivers included in the Install Disc.

Print server setting up

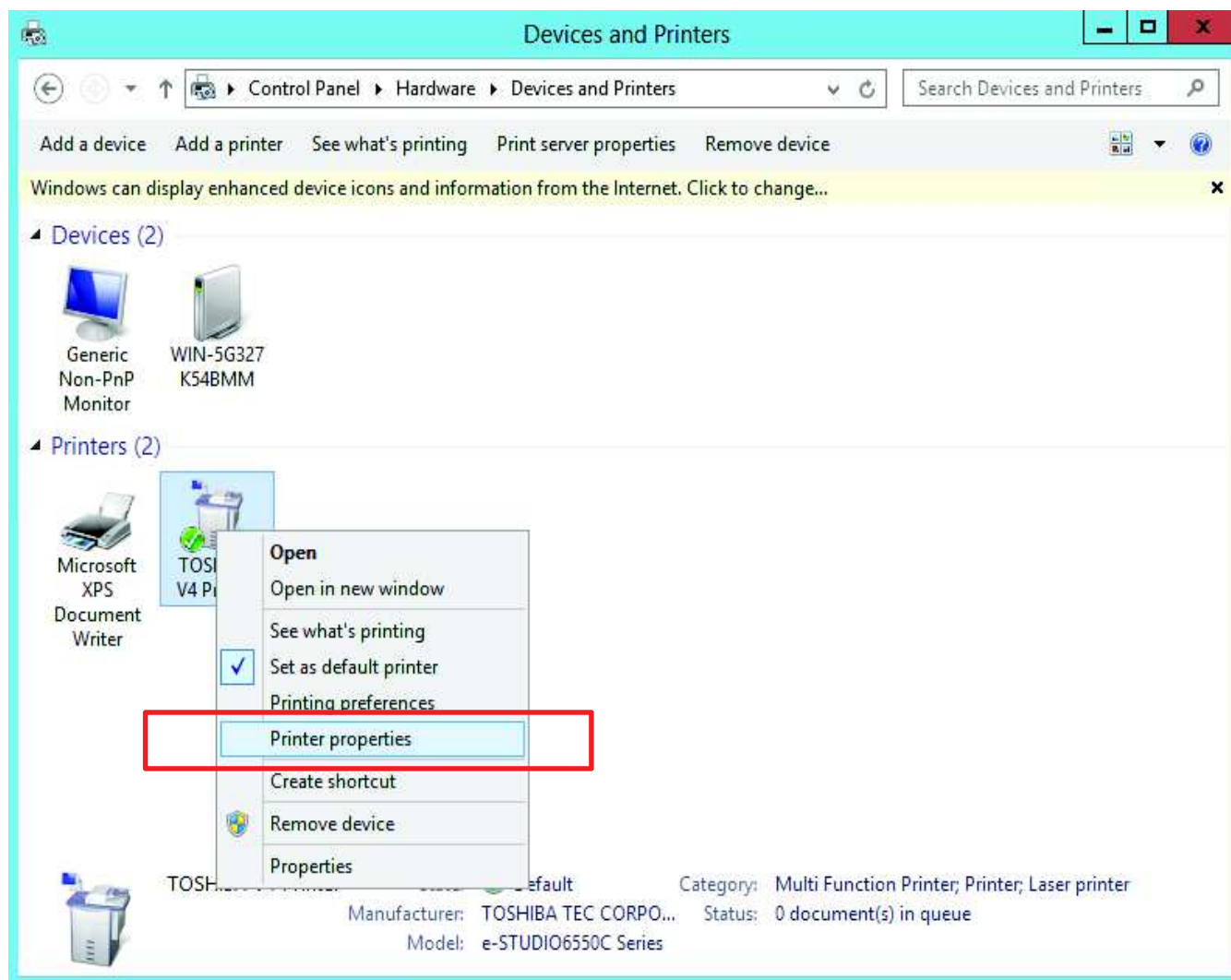
1. Right-click [Start] and select [Control Panel] > [View devices and printers].

The Printers folder screen appears.

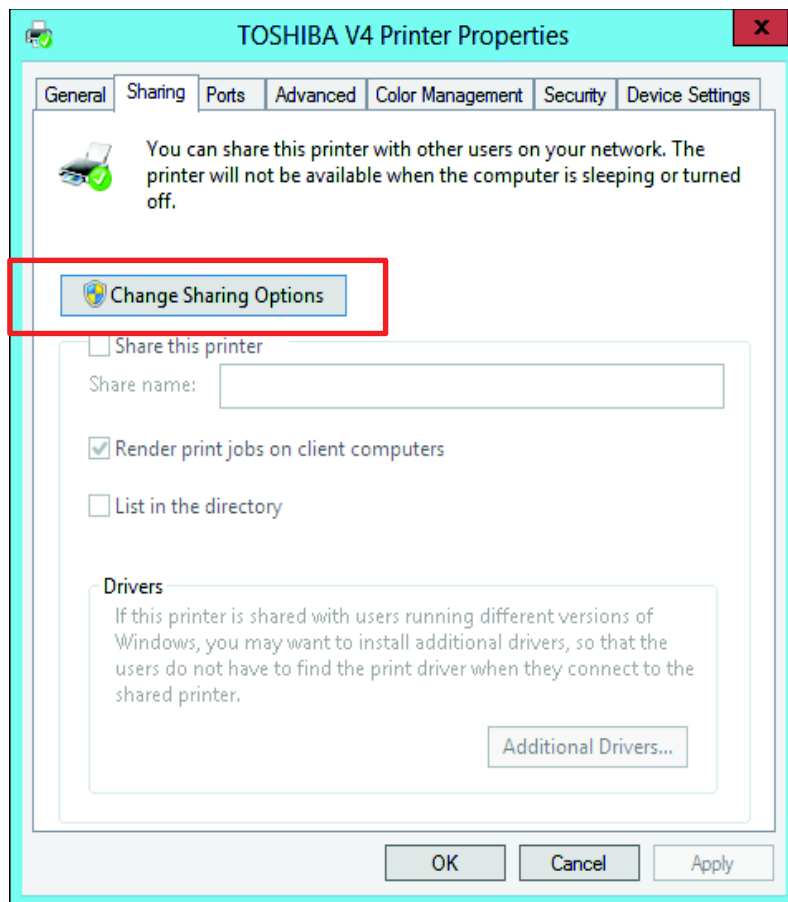
Tip

- When Windows 8.1 or Windows Server 2012 is used, right-click the mouse at the left bottom of the screen and select [Control Panel] > [View devices and printers].

2. Right-click the printer driver of this MFP and select [Printer properties] from the menu displayed.



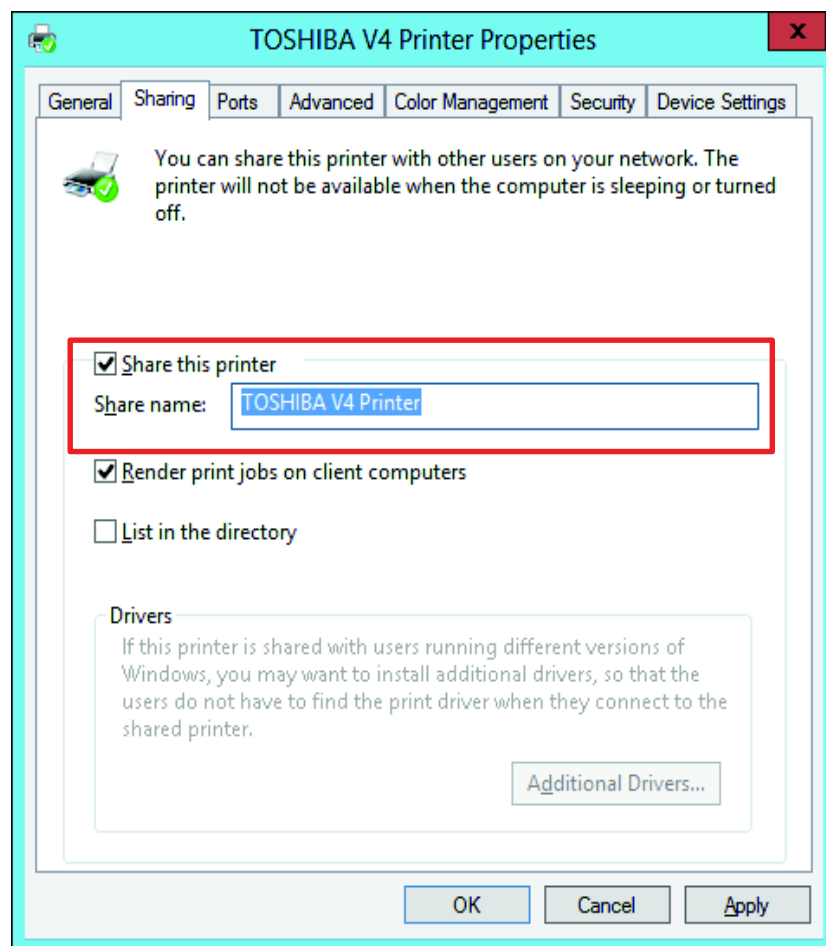
3. Select the [Sharing] tab and click [Change Sharing Options].



Tip

Performing [Additional Drivers] may be required for the printer drivers included in the Install Disc. However, it is not necessary to do so for a V4 printer driver.

4. Select the [Share this printer] check box and change the name in the [Share name] box if necessary.

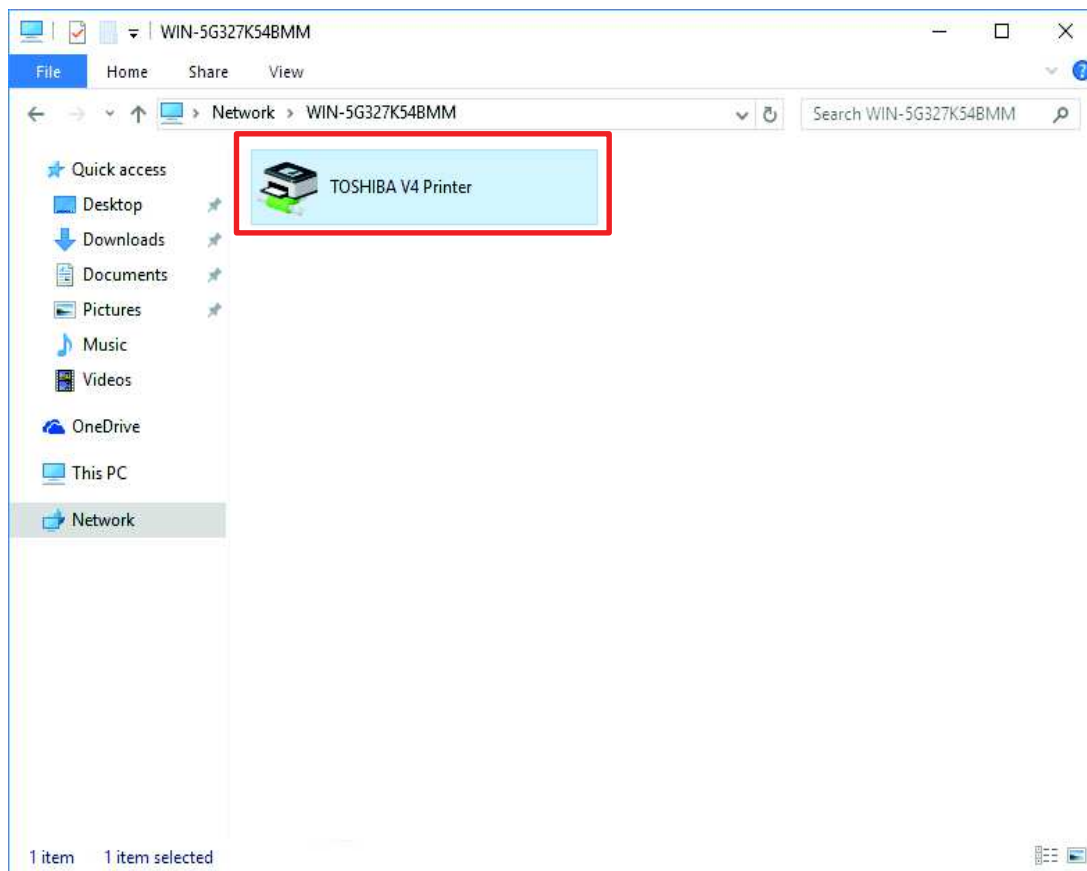


5. Click [Apply] or [OK] to store the setting.

Use of the shared printer from the client computer

14

1. Right-click [Start]. Select [Control Panel] > [Network and Internet] > [View network computers and devices].
2. Double-click the print server and the shared printer.

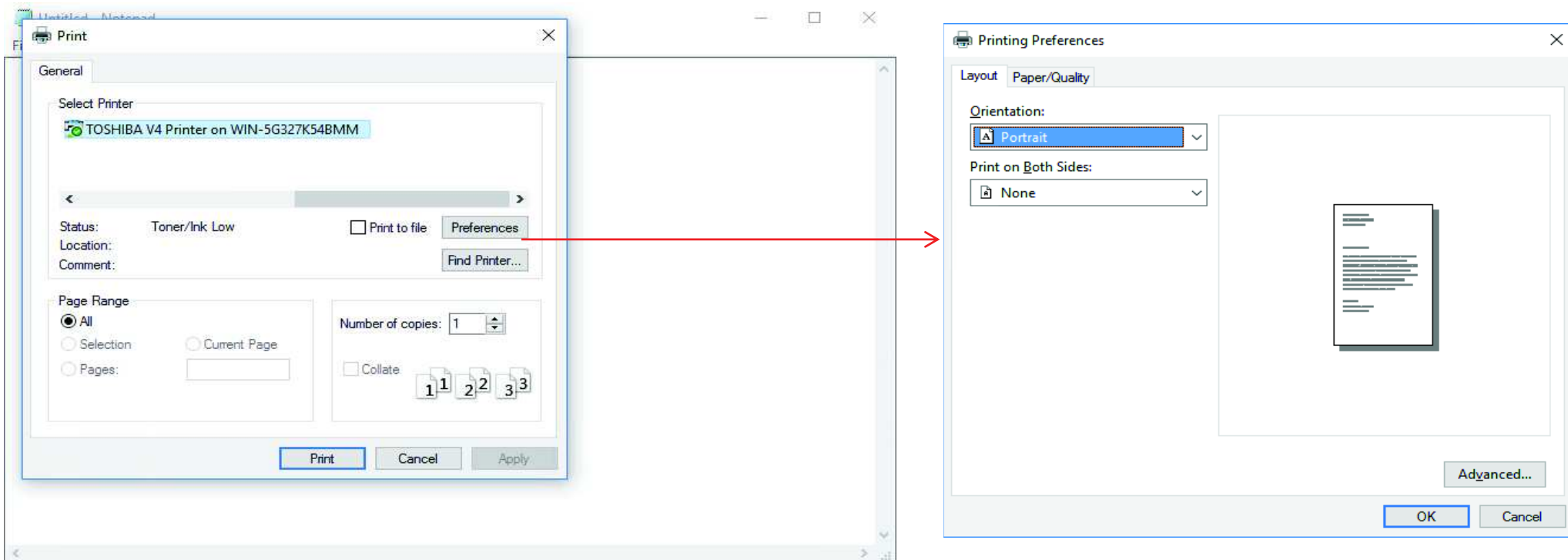


Tip

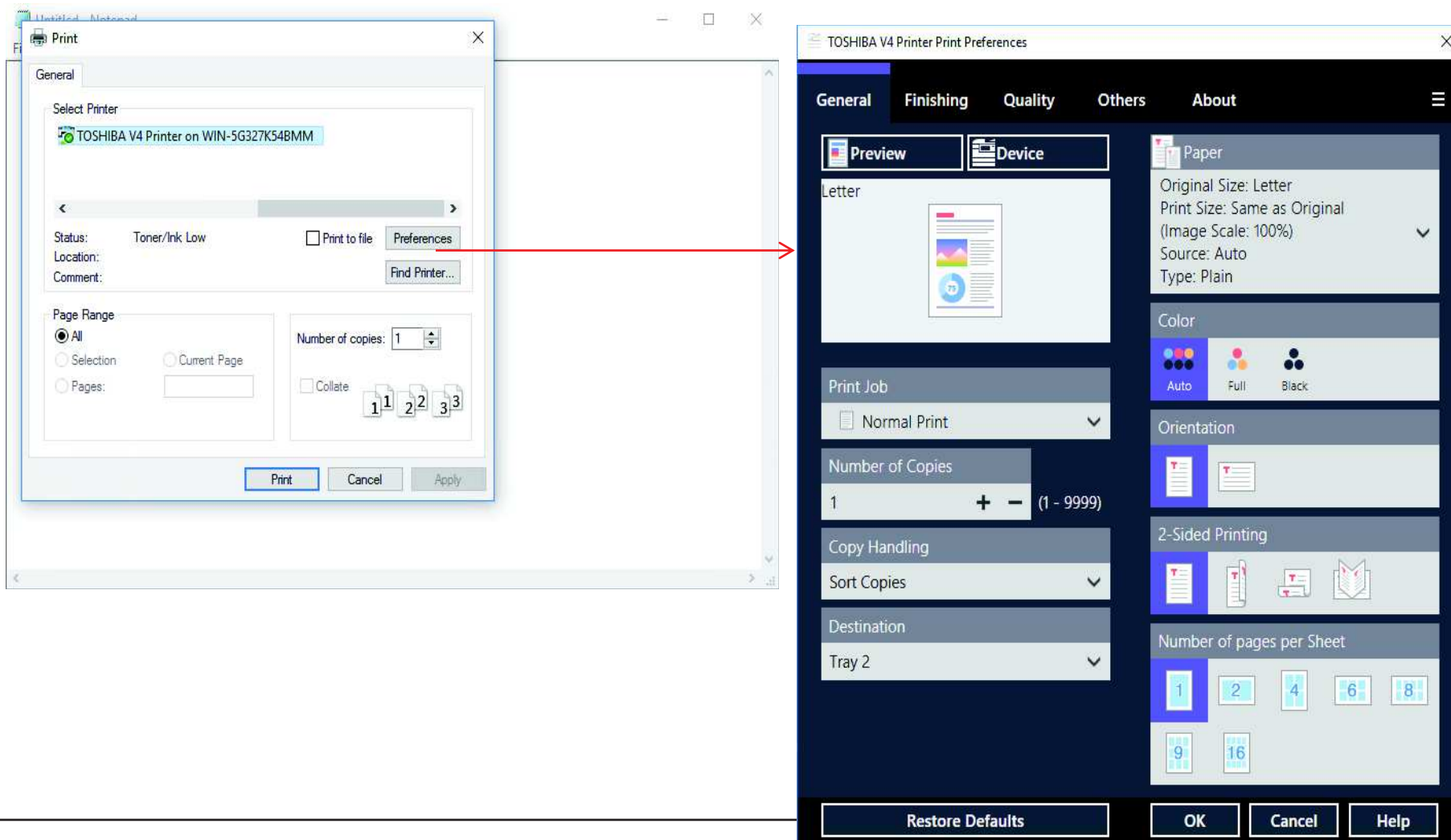
The printing function will become usable for the printer drivers included in the Install Disc if you have carried out all of the above steps.

However, for a V4 printer driver, it is necessary to perform the following steps.

After the steps mentioned above have been completed, the following screen will appear when the printing preferences screen is opened.



3. By referring to "V4 printer driver installation", install a V4 primer driver in the client computer, too. After that the printing preferences screen of a V4 printer driver is displayed as below and the print function will become usable.



Tip

If the internet connection is available and Windows Update can be accessed, TOSHIBA V4 Printer will be automatically installed from Windows Update.

In such a case, this step is not necessary.

4. By referring to "Toshiba Print Experience installation", install Toshiba Print Experience in the client computer, too.

Note

The following are the precautions when printing is performed from the client computer using the shared printer.

Under the work group environment, when an attempt to connect to the print server is made by a user different from the one logged in a client computer, the following phenomena may occur.

- User Authentication has failed and printing may be performed in accordance with the setting of [Authentication failed print job/Raw Print Job].
- During Private Print or Hold Print, a user name connected to a print server may appear in the [User Name] box displayed on the touch panel of this MFP.

Tip

Succession or failure of User Authentication can be confirmed by the following manner.
Check the user name of the job printed in the print job or print log of this MFP.
If the user name logged in the client computer is displayed, User Authentication has succeeded.

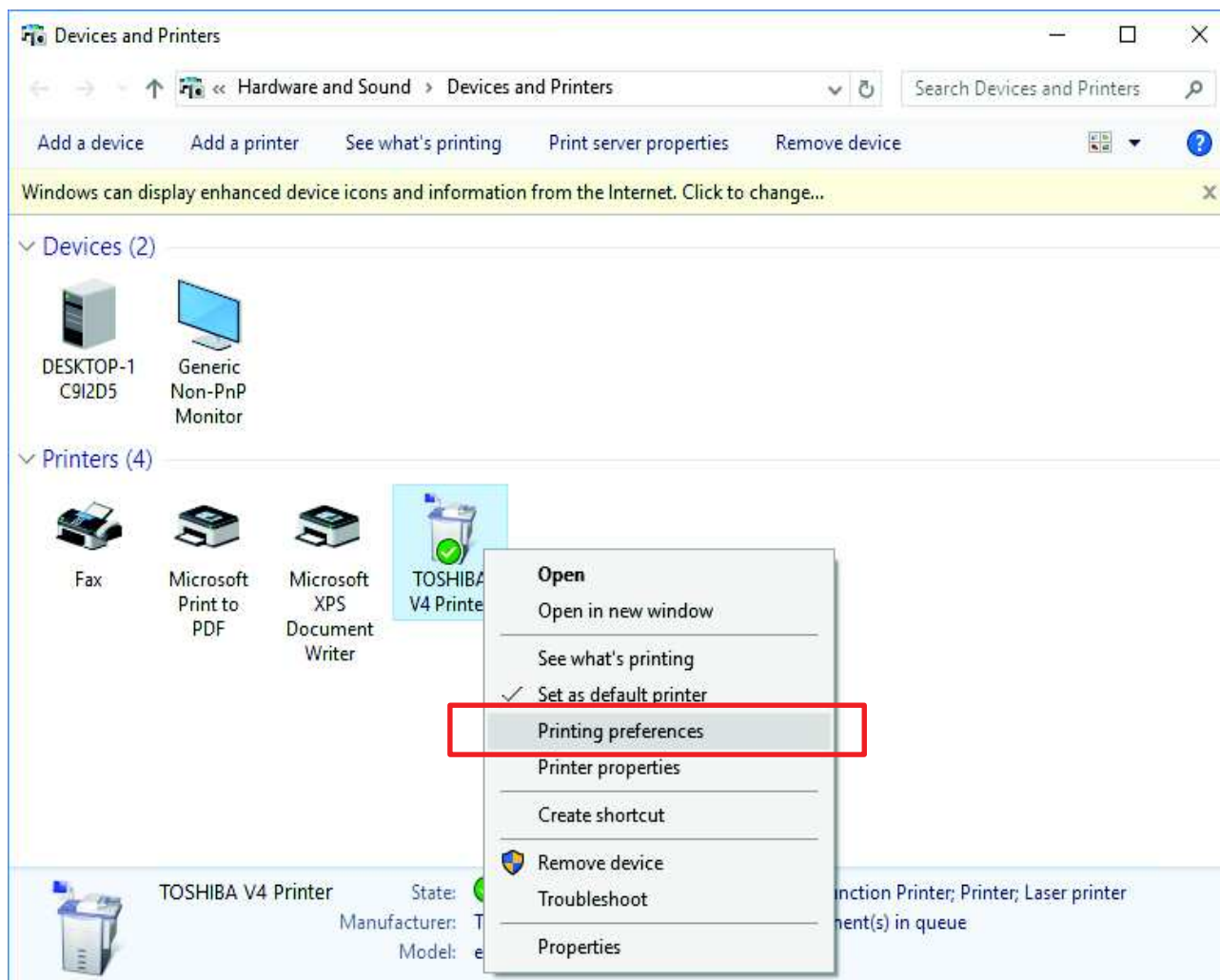
When the above phenomena have occurred, if the steps below are performed in the client computer, printing may be executed properly by the user logged in the client computer.

1. Right-click [Start], select [Control Panel] > [View devices and printers].
The Printers folder screen appears.

Tip

- When Windows 8.1 or Windows Server 2012 is used, right-click the mouse at the left bottom of the screen and select [Control Panel] > [View devices and printers].

2. Right-click the printer driver of this MFP and select [Printer Preferences] from the menu displayed.



3. Click [OK] to store the setting.

